

Addison County Solid Waste
Management District

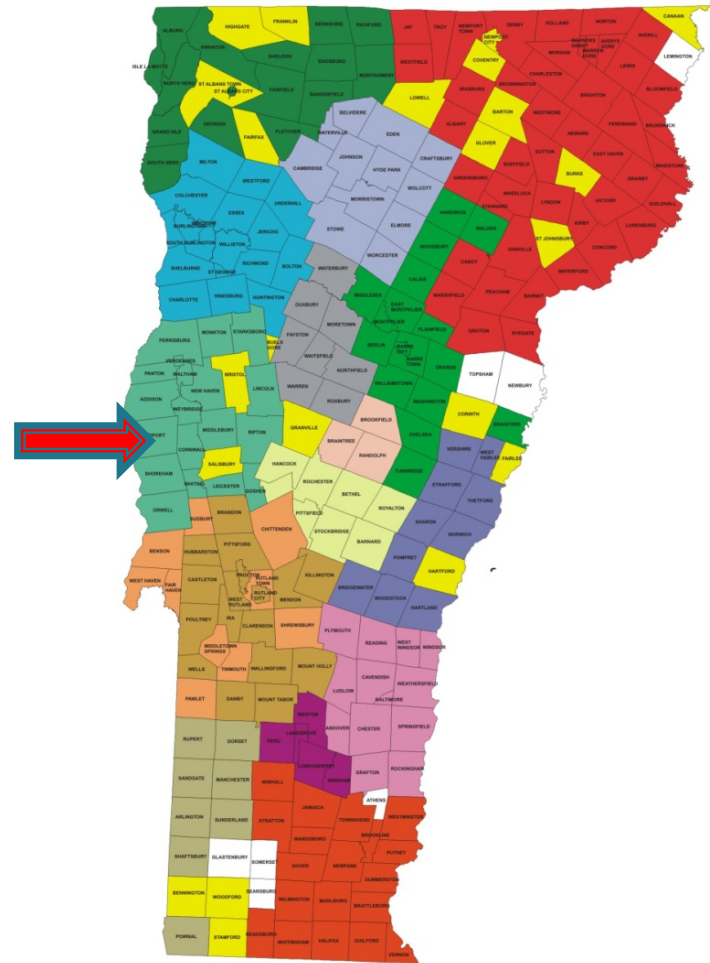
Household Hazardous Waste Workshop

NH Municipal Association

Addison County Solid Waste Management District

- ▶ Transfer Station in Middlebury, Vermont
- ▶ 19 Member Towns
- ▶ ~31,000 people
- ▶ Smallest town just over 200 people

State of Vermont
Solid Waste Planning Entities



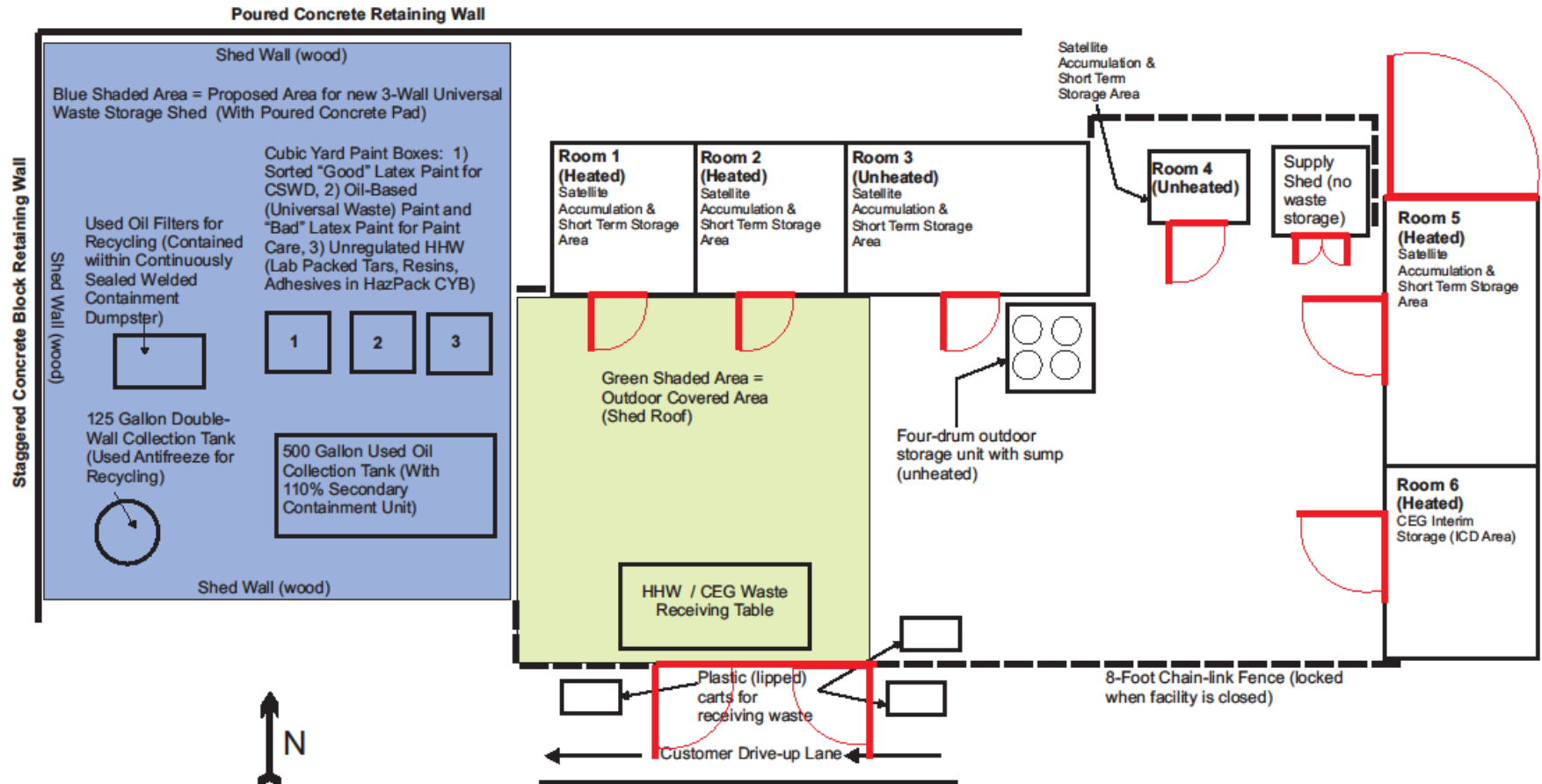
Where we started

- ▶ 22 collection events in 2003
- ▶ Contractor set-up fees increasing rapidly
- ▶ Event permits, coordination lots of work
- ▶ Traffic/site safety concerns
- ▶ Some events very small
- ▶ No winter option for HHW
- ▶ Not convenient for CEGs
- ▶ Most recycled or Universal wastes (E-waste, bulbs, batteries, motor oil, oil filters, mercury devices, antifreeze, propane tanks managed and tracked separately

Where we are now

- ▶ Permanent, year-round facility open 308 days per year
- ▶ Facility on same site as solid waste transfer station, and District office
- ▶ No special events now, but will return to some events in 2017 (to satisfy VT's new convenience standard)
- ▶ We've always collected latex paint, and continue to do so
- ▶ Small Quantity Generator (Accepting CEGs)

Addison County
Solid Waste Management District
HazWaste Center Facility Map
NOTE: Drawing Not to Scale





Addison County Solid Waste
Management District



Addison County Solid Waste
Management District

Operations

- ▶ Staffing
 - 5 cross-trained
- ▶ Open Hours for Residential
 - About 5 per day
- ▶ Communications!!
- ▶ Sorting / Packing / Bulking
- ▶ CEGs and Trash Haulers
 - One every 3 days
- ▶ Daily Inventory/Inspection



**ADDISON COUNTY SOLID WASTE MANAGEMENT DISTRICT
HAZWASTE CENTER - CEG PRE-REGISTRATION FORM**



Business Name:		Date:	
Business Address:			
Contact Name(s):			
Phone Number:		Fax Number:	
E-Mail:			
For District Use Only		Date of form receipt:	
Appointment Date:	Appointment Time:	Drums?	YES NO

Please note: A signature is required. In order to receive an appointment time, the District must first receive a SIGNED copy of this completed form.

General description of wastes (e.g., corrosives, oil-based paint, latex paint, thinners, aerosol cans, pesticides, herbicides, adhesives, tar, etc.) Use additional pages if necessary.	Approx. Quantity (indicate gals. or lbs)
Customer Signature:	Date:

Businesses are responsible for all disposal costs. Call 802-388-2333 with questions.
We will contact you to set an appointment time after receiving this form.



Addison County Solid Waste
Management District



Addison County Solid Waste
Management District



Program Products

These products have fees and are accepted at drop-off sites:

- Interior and exterior architectural paints: latex, acrylic, water-based, alkyd, oil-based, enamel (including textured coatings)
- Deck coatings, floor paints (including elastomeric)
- Primers, sealers, undercoaters
- Stains
- Shellacs, lacquers, varnishes, urethanes (single component)
- Waterproofing concrete/masonry/wood sealers and repellents (not tar or bitumen-based)
- Metal coatings, rust preventatives
- Field and lawn paints

Products must be in original containers with original labels.

Latex paint that is dried out and "rock hard" is also acceptable.



Non-Program Products

These products do not have fees and are not accepted at drop-off sites:

- Paint thinners, mineral spirits, solvents
- Aerosol paints (spray cans)
- Auto and marine paints
- Arts and crafts paints
- Caulking compounds, epoxies, glues, adhesives
- Paint additives, colorants, tints, resins
- Wood preservatives (containing pesticides)
- Roof patch and repair
- Tar and bitumen-based products
- 2-component coatings
- Deck cleaners
- Traffic and road marking paints
- Industrial Maintenance (IM) coatings
- Original Equipment Manufacturer (OEM) (shop application) paints and finishes

Leaking, unlabeled, and empty containers are not accepted at drop-off sites.

To learn more, please call (855) 724-6809 or visit www.paintcare.org

Construction Costs

- ▶ Prefab building: \$41,000 (2nd Bldg. at no cost)
- ▶ Concrete pad: ~ \$10,000 (2 separate pours)
- ▶ Original canopy: \$8,200
- ▶ Fence: \$4,850
- ▶ Electrical (\$500 for 1st Bldg, ~ \$4,000 for 2nd Bldg)
- ▶ Misc. signage: \$100
- ▶ New shed for paint sorting area (non-haz): \$18,200
- ▶ **Total cost: Approximately \$86,850**

2015 Annual Budget

- ▶ Disposal: \$27,000
- ▶ Supplies: \$7,500
- ▶ Advertising: \$2,000
- ▶ Inspections: \$870
- ▶ Misc repairs/equipment: \$1,500
- ▶ Training: \$2,600
- ▶ **Total annual budget (not incl. staff labor):
\$41,470**
- ▶ **Staff labor, benefits, overhead: \$110,000**

Surprise!

- ▶ Picric acid
- ▶ Ether
- ▶ Ammunition
- ▶ Ag Pesticides
- ▶ Mayonnaise
- ▶ Jar of Mercury



Unknowns



I bought a farm...





Addison County Solid Waste
Management District





- ▶ About 300,000 lbs/year = 1,000 lbs/day = about 1.5 gaylords each day



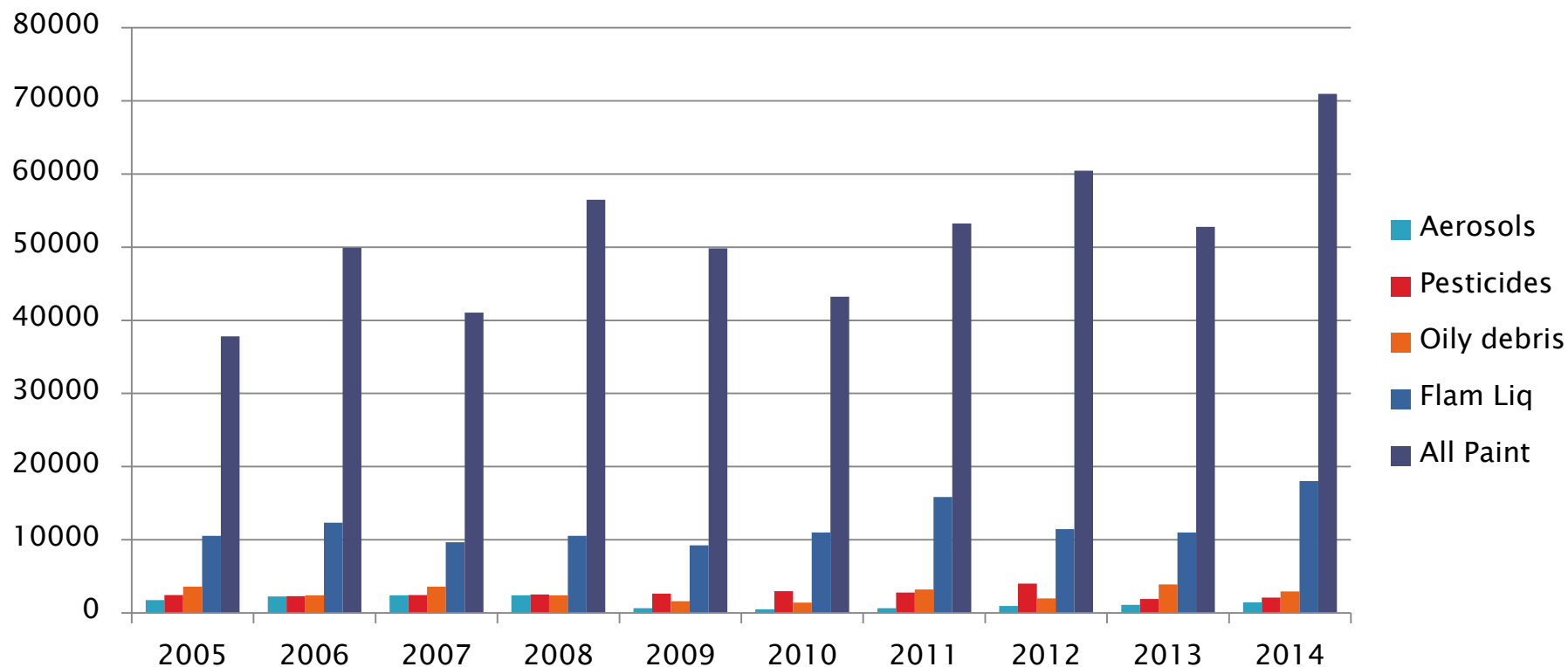


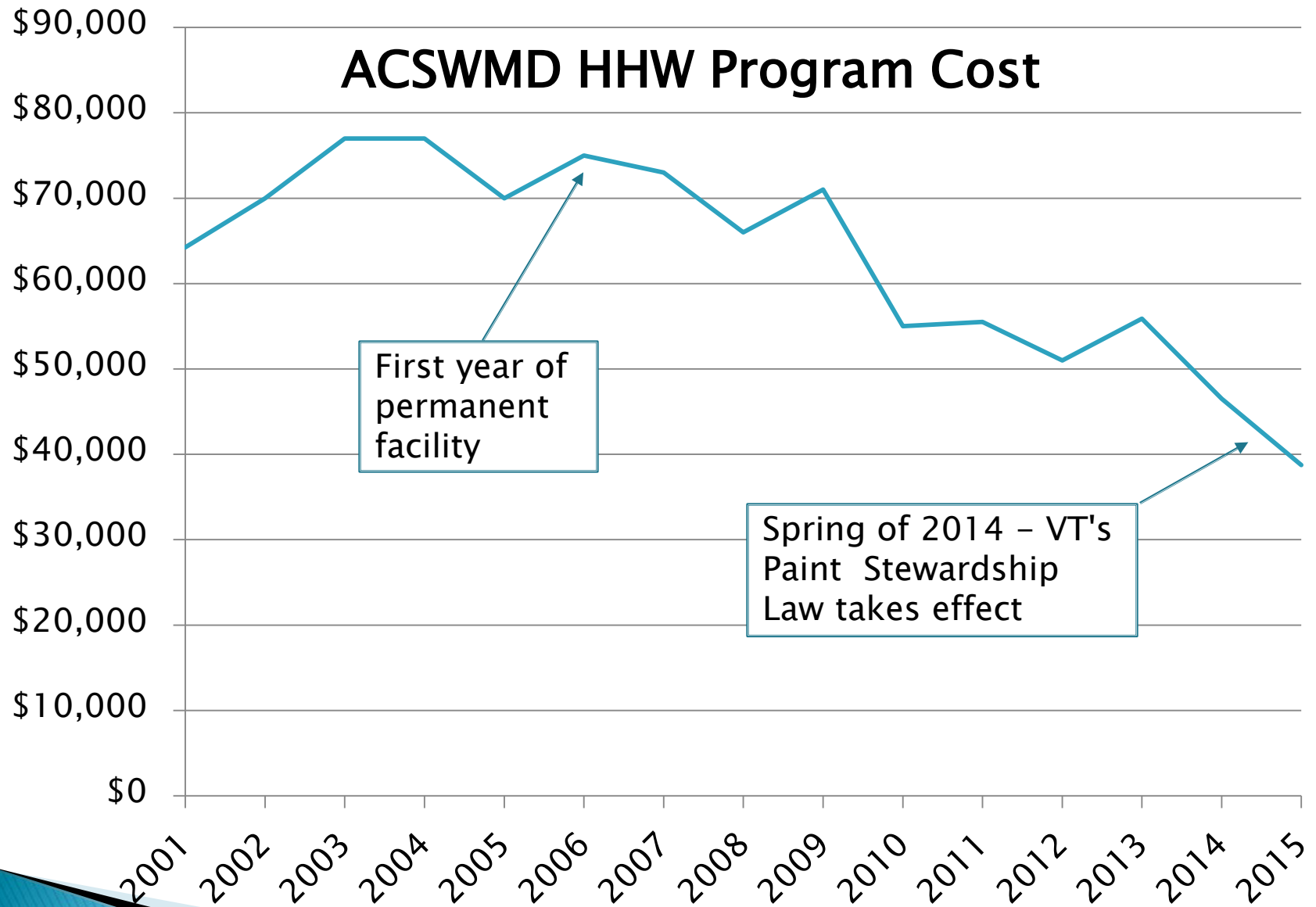
Addison County Solid Waste
Management District

Training

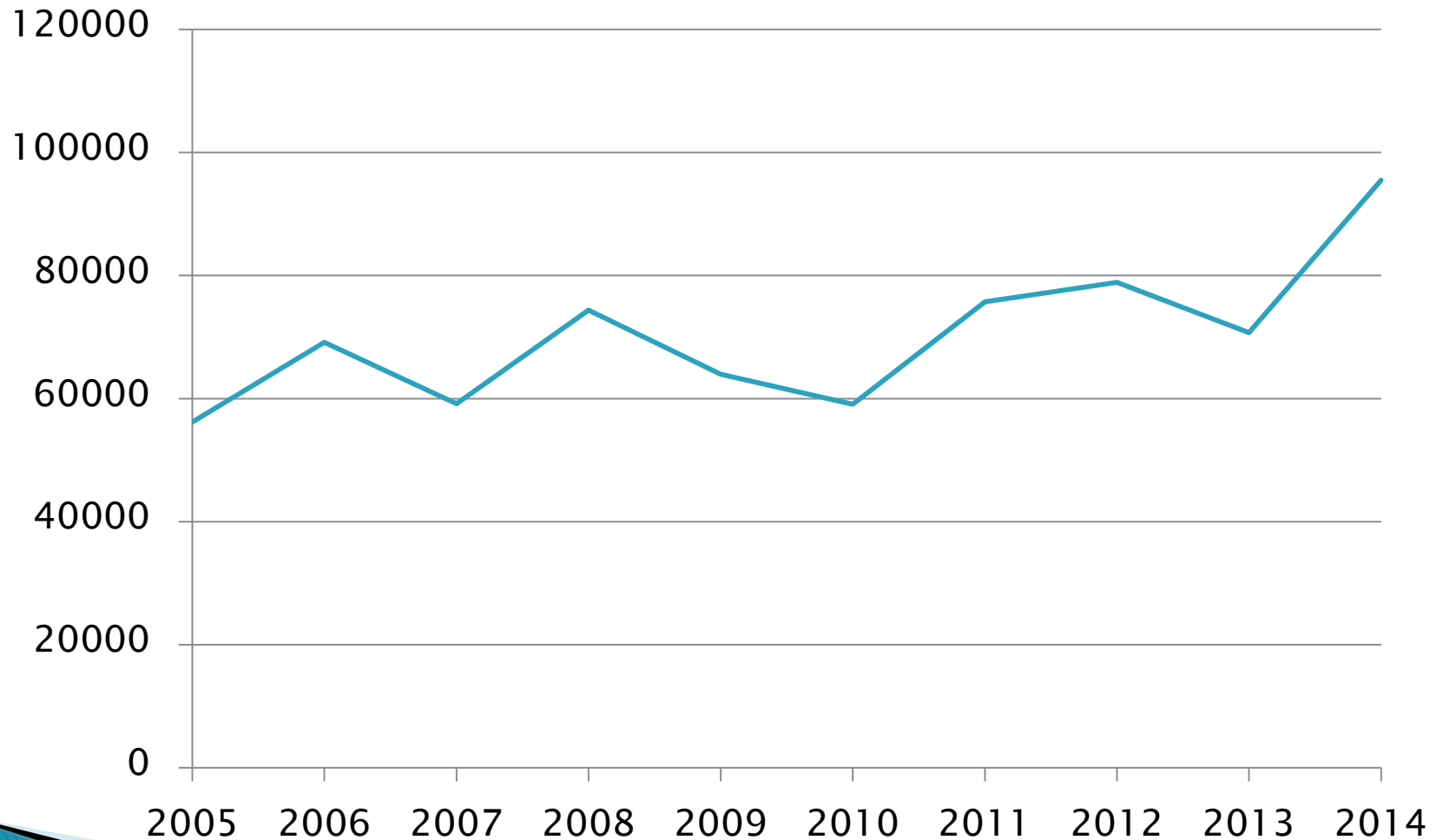
- ▶ HAZWOPER
- ▶ RCRA
- ▶ DOT
- ▶ Fire Extinguisher
- ▶ SPCC
- ▶ Forklift/PIT/Loading Dock Safety
- ▶ Respirator
- ▶ Facility Management Plan / Emergency Response
- ▶ Health and Safety Plan
- ▶ Fall Protection
- ▶ CPR / First Aid / HAZCOM / BB Path
- ▶ Asbestos Awareness?

Hazardous Waste (lbs) Collected at the HazWaste Center





Total (lbs) of Most Common Wastes Collected at the HazWaste Center



Thank You!

- ▶ Don Maglienti
- ▶ Addison County Solid Waste Management District
- ▶ 802-388-2333
- ▶ don@acswmd.org
- ▶ www.AddisonCountyRecycles.org