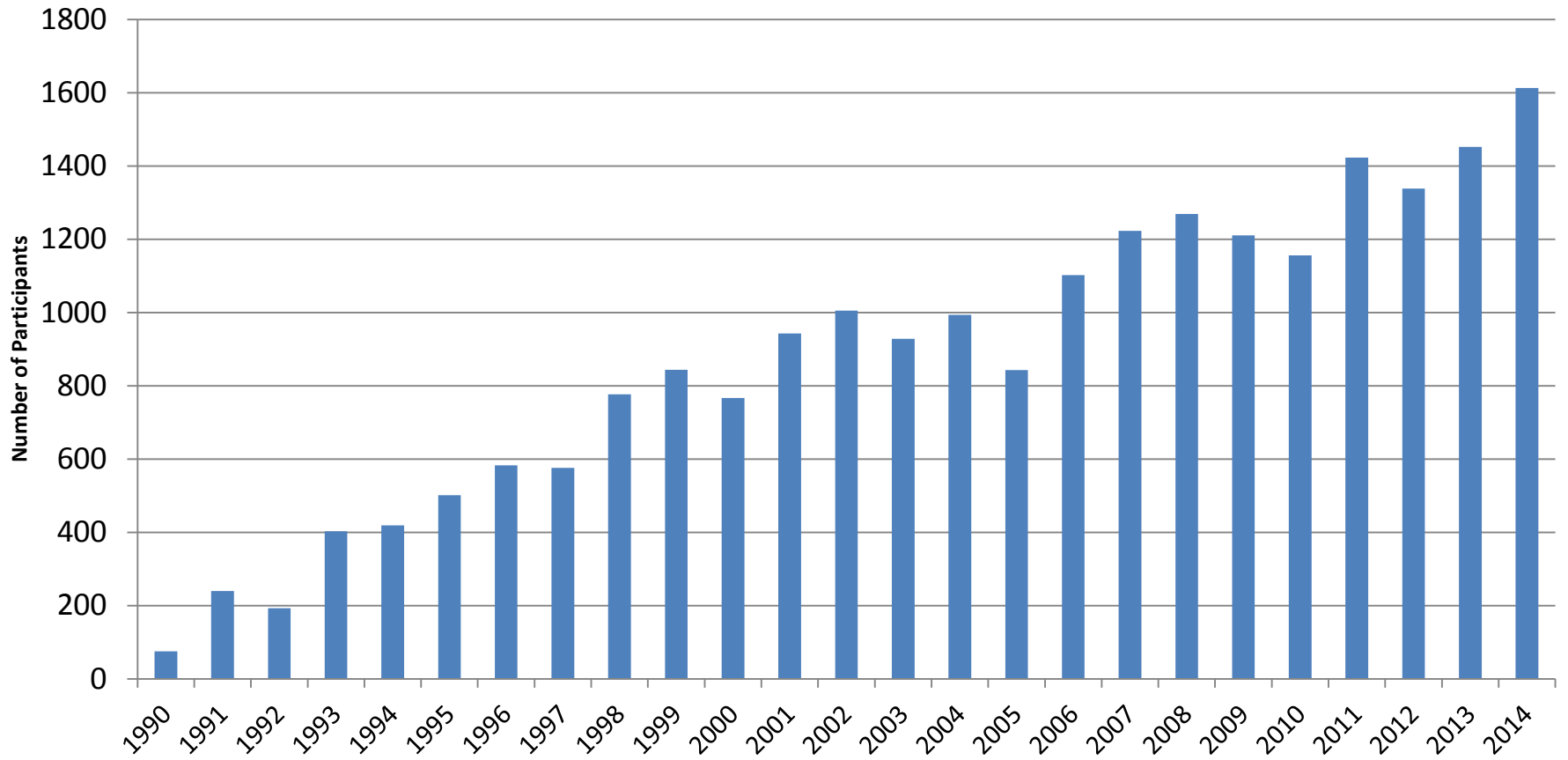
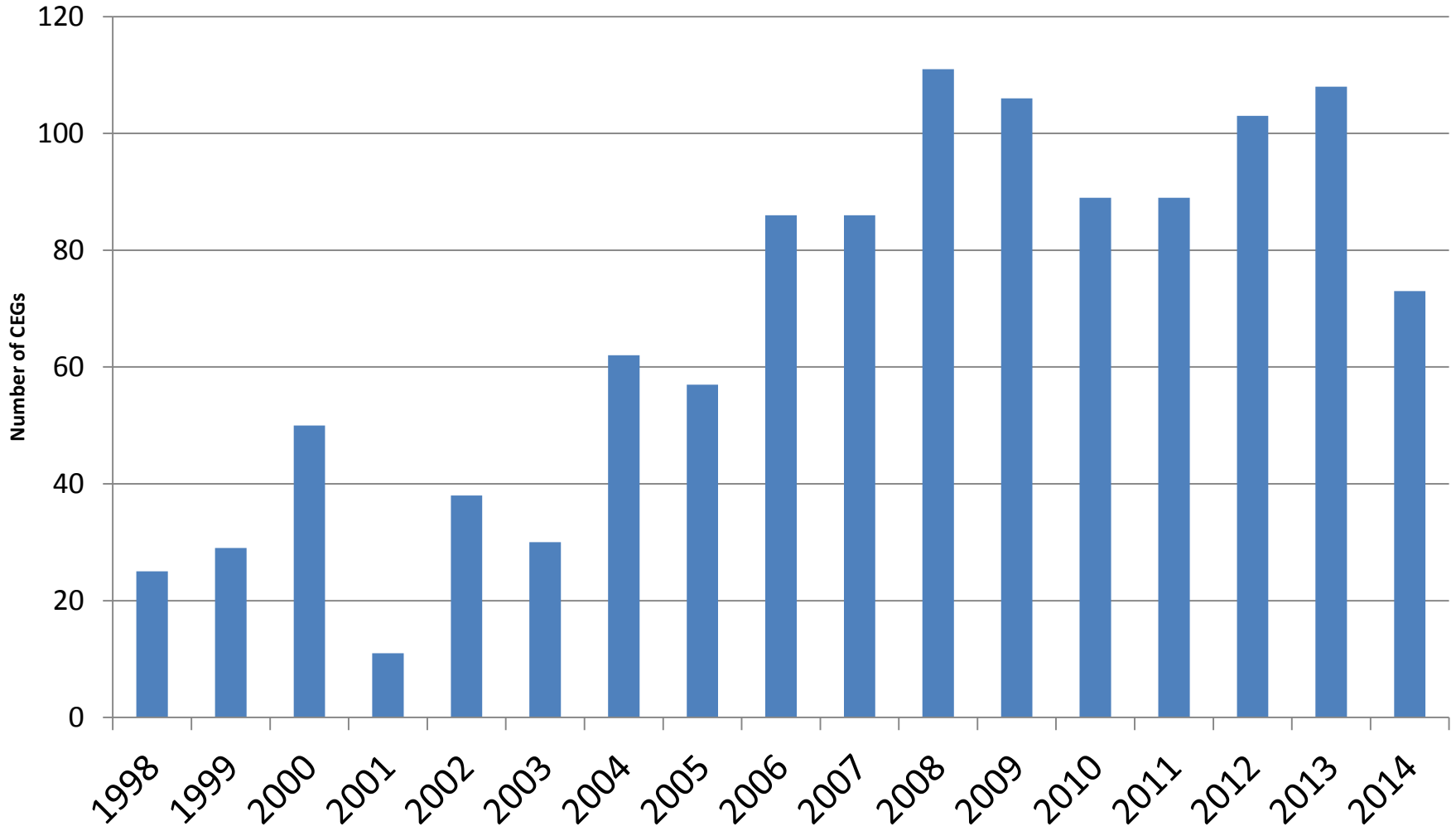


ACSWMD HHW Participation (Households), 1990-2014

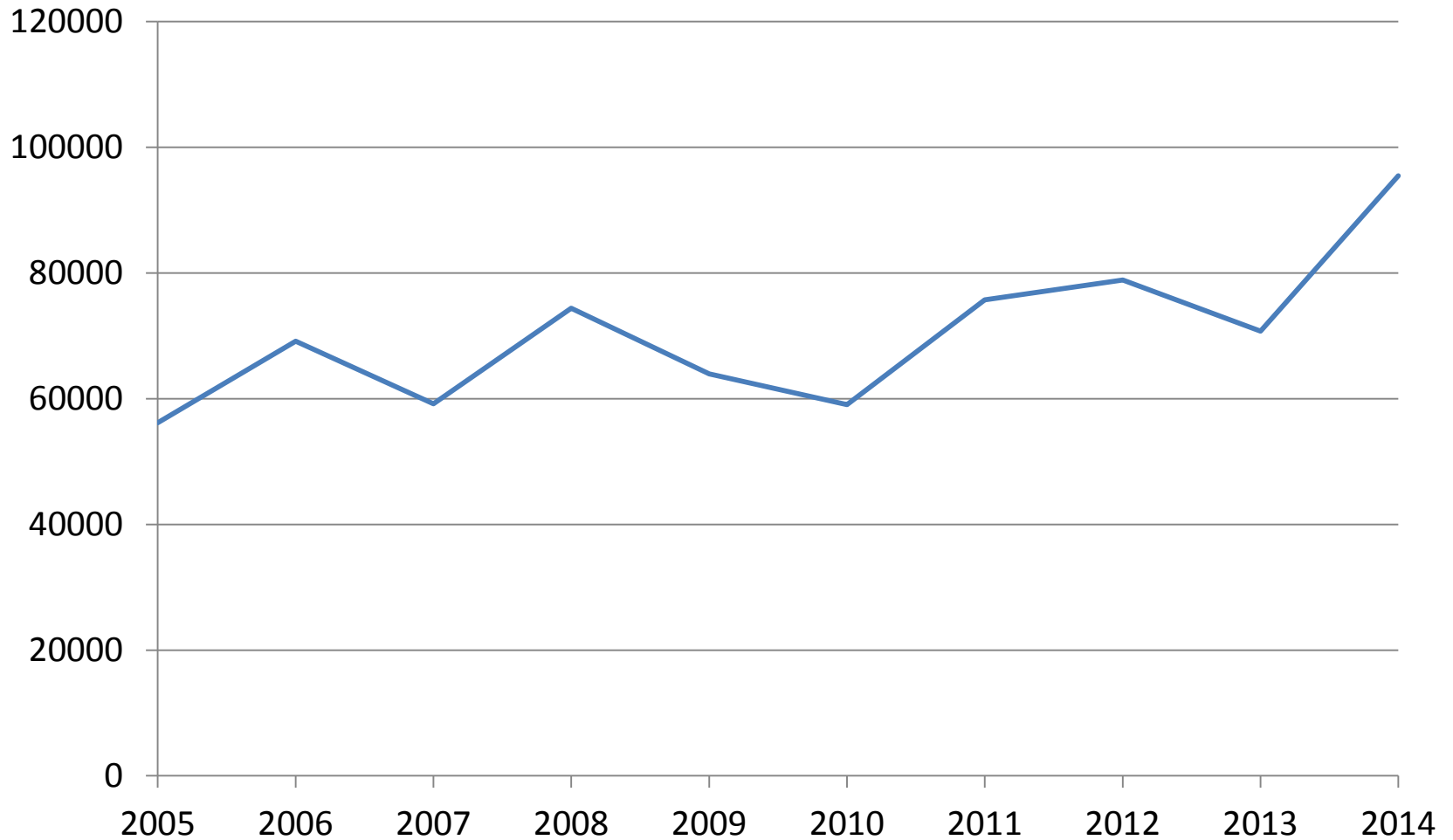


ACSWMD

Conditionally Exempt Generator (CEG) Participation 1998 through 2014



Most Common Wastes (lbs) Collected at the HazWaste Center



19 Member Towns

- 11,769 households
- 1,613 used the HazWaste Center in 2014
- 13.7% participation rate
- Does NOT include motor oil, oil filters, fluorescent lamps, batteries, tanks, E-waste, etc.
- Cost per participant roughly \$93 with labor, benefits, overhead, but this could be high